

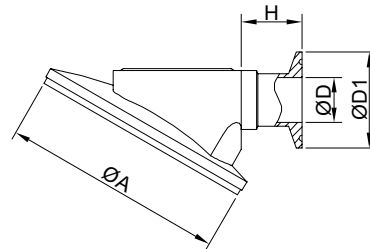
罐底隔膜阀 KST221

TANK BOTTOM DIAPHRAGM VALVE

工作压力：0-10bar
 工作温度：-40~150℃
 驱动机构：手动控制
 密封材质：EPDM,EPDM+TFM
 阀体设计：直通阀体设计
 阀体材质：316L（铸造，EN1.4409 CF3M）
 接口尺寸：DN20/DN50
 接口方式：KST221-1：焊式、KST221-2焊卡式、
 KST221-3:卡式
 表面处理：外表面Ra≤0.5μm（SF1），
 内表面Ra≤0.375μm（SF4）
 接口标准：ISO,DIN,ASME BPE.3A,BS



Working pressure: 0-10bar
 Working temperature: -40~150℃
 Drive mechanism: manual control
 Seal material: EPDM+TFM, EPDM
 Body design: straight through valve design
 Body material: 316L (casting, CF3M EN1.4409)
 Interface size: DN20/DN50
 Interface type: KST221-1 type, KST221-2 type welding:
 welding, KST221-3: card
 Surface treatment: the outer surface of Ra is less than or equal
 to 0.5 m (SF1),
 The inner surface of Ra is less than or equal to 0.375 m (SF4)
 Interface standard: ISO, DIN, BPE.3A BS, ASME



No.KST221-1

Size	D	D1	H	A
DN15	15.8	50.5	25	118
DN20	18.1	50.5	32	118
DN25	22.1	50.5	32	118
DN32	28.5	50.5	36	145
DN40	34.8	50.5	36	145
DN50	47.5	64	38	185

驱动器（气动）

类型：KST-PC221

尺寸：DN20-DN50

主要材质：不锈钢阀帽、支座、阀杆、PC手轮

状态显示：手动开关状态显示如图

Drive (pneumatic)

Type: KST-PC221

Size: DN20-DN50

Main material: stainless steel valve cap, bearing, valve stem, PC hand wheel

Status display: manual switch status display

SIZE	DN20	DN25	DN40	DN50
open	11	14	22	28
close	1	1	1	1