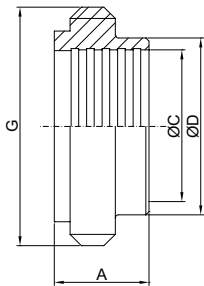




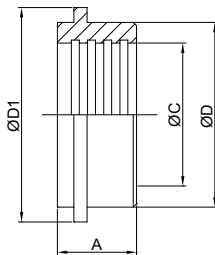
膨胀型螺纹接头
Expanded Male



ISO/IDF No.KST-U004

Size	A	C	D	G
1"	16.5	25.5	29.2	37.13×8TACME
1 1/2"	19.5	38.2	42.7	50.65×8TACME
2"	19.5	50.9	56.2	64.16×8TACME
2 1/2"	25	63.6	69.9	77.67×8TACME
3"	30	76.3	82.6	91.19×8TACME
4"	35	101.7	111	125.9×6TACME

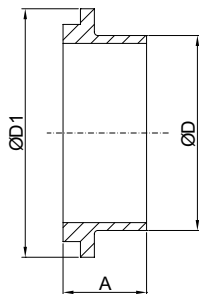
膨胀型平接头
Expanded Liner



ISO/IDF No.KST-U005

Size	A	C	D	D1
1"	20.0	25.5	29.2	33.8
1 1/2"	20.0	38.2	42.7	47
2"	25.0	50.9	56.2	60.5
2 1/2"	30.0	63.6	69.9	74
3"	30.0	76.3	82.6	87.5
4"	30.0	101.7	111.0	120.6

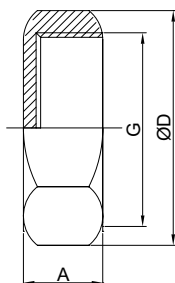
平接头
Liner



ISO/IDF No.KST-U006

Size	D		D	D1
	IDF	ISO		
1"	25.4	25.6	21.5	33.8
1 1/2"	38.1	38.6	21.5	47.0
2"	50.8	51.6	21.5	60.5
2 1/2"	63.5	64.1	21.5	74.0
3"	76.2	76.7	21.5	87.5
4"ISO	-	102.5	21.5	114.1
4"IDF	101.6	-	30	120.6

盲螺母
Blind Cap



ISO/IDF No.KST-U007

Size	A	D	G
1"	30.0	46.0	38.3×8TACME
1 1/2"	30.0	60.0	51.8×8TACME
2"	30.0	75.0	65.3×8TACME
2 1/2"	30.0	90.0	78.8×8TACME
3"	30.0	105.0	92.3×8TACME
4 "ISO	30.0	135.0	119.4×8TACME
4 "IDF	35.0	143.0	127.2×8TACME